



BOROUGH OF BELLEFONTE
HISTORICAL ARCHITECTURAL REVIEW BOARD

8:30 AM Tuesday August 24th 2021 "Virtual" Meeting

DEPARTMENT OF COMMUNITY AFFAIRS

Agenda item 2:

Project Review

Project 1:

160 Dunlop Street (Gamble Mill)

Project Applicant:

Michael Marx, Creekside at the Gamble Mill
(Albertin Vernon Architect, LLC will present)

Contributing Building: Yes

Character Defining Features & Setting:

Building shape and roof features - tall four-story brick building with steeply pitched gable roof

Openings - arched multi-pane wood window sash and wood doors

Projections - stepped parapet on gable end; large gabled wing; smaller ell

Trim and Secondary Features - wood trim, stone wall

Materials and Craft Details - brick building with wood windows and details

Setting - edge of waterfront business district, at Lamb's Crossing. Adjacent to mill race and railroad tracks, near other commercial and industrial buildings



Project description: Construction of a new approximately 520 square foot dining deck at the south end of the Gamble Mill to provide outdoor seating at Creekside at the Gamble Mill. Deck to be constructed of pressure treated wood with black powder coated steel post and cable rail guard to match guard rails at the Gamble Mill. Deck elevation to be flush with the existing dining room floor.

****** Architect plans and renderings are included in the packet***

Project 2:

320 W. High Street (Train Station)

Project Applicant:

Bellefonte Borough

Contributing Building: Yes

Character Defining Features & Setting:

Queen Anne style, built in 1888/89.

Roof is Dutch gable with raised crossing gable at center.

Trim and Secondary Features – 9/9 DH original windows; Porch: 6 large timber trusses, 10 ft overhang 64 ft. X 20.5 ft.

Materials and Craft Details –Brick with limestone foundation.

Setting: Talleyrand Park



Project description: The Borough received a grant from PHMC to do work on the Train Station. 1) Replace existing roof w/ EcoStar Rubber FoShingle; 2) Re-paint all exterior wood; 3) replace and fix all broken shakes
******Additional information on project scope and materials is included in the packet***



Existing
Shakes



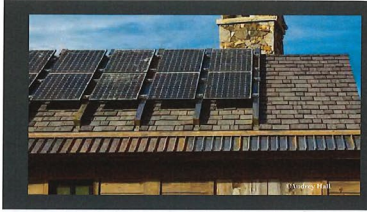
Paint and repairs



Sustainable Roofing

Commit yourself to a better future while experiencing the beauty of sustainable design. Dedicated to using once loved materials, EcoStar manufactures its roofing tiles with a compound made of up to 80% recycled rubber and plastic polymers. Utilizing EcoStar products aids in the preservation of natural resources. No trees are used in the production of our shake tiles and no stones quarried for our slate tiles. EcoStar's proven polymers offer a long life cycle proudly backed by our 50-year Gold Star Warranty. This extended life is one of the most important keys to sustainability.

See www.ecostarllc.com for available warranties



EcoStar rubber roof



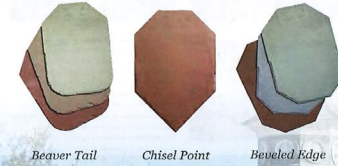
Example of rubber roof on spring house



Imagination Unleashed

EcoStar Designer Series Slate™

Let our attention to detail help your project go beyond all expectations. Those with a keen sense of color and architectural design can enjoy the multitude of profiles and hues offered with Designer Series Slate. The unique shapes and color palette of Beaver Tail, Beveled Edge and Chisel Point profiles accentuate a distinguished look like no other. Designer Series Slate is now available in both Majestic and Empire formulations.



Beaver Tail

Chisel Point

Beveled Edge



Agenda item 5:

Old Business:

325 W. High Street (My Buzz Café) – roof material

Agenda item 6:

New Business: